

Important information regarding The School Donations Scheme and the Equity Index

Kia ora Whānau,

We are writing to inform you of important developments that are being made to the decile system and the impact and benefits this will have for our school community.

What is changing?

Our school currently receives government funding and staffing to operate our school, the amount of funding being based on the number of students we have. The government also offers targeted funding which includes 'Equity Funding'. Currently our Equity Funding is based on how many students we have and our school decile.

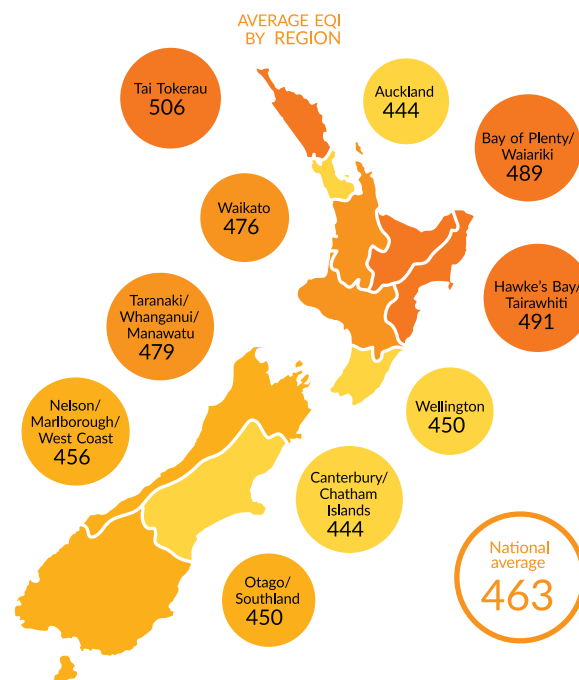
As of 2023 school deciles will be phased out as the Ministry implements a new measure called the Equity Index (EQI).

What is the Equity Index?

The Equity Index (EQI) is a statistical model that tells the Ministry the extent to which a school's students might face socio-economic barriers that could prevent them from achieving at school.

A higher number indicates that a school or kura is likely to have a higher number of students facing greater socio-economic barriers relative to another school or kura.

The EQI therefore identifies schools that require additional funding and resources to support learning.



The EQI is NOT a measure of school quality
It is used by the Ministry to target equity funding and resources.



The EQI is a complex tool with strict privacy protections. School Boards, Principals and staff will not be provided with any information about ākonga, families or whānau that has been used to generate their EQI number.

This number will be updated every year.

School Donations

A schools EQI will also be used when considering other resources, like the School Donations Scheme. Eligible schools can opt-in to the School Donation Scheme to receive extra funding with the condition that parents and whānau are not asked for certain donations. From 2023, our school will be eligible to join the School Donation Scheme. Our school board has considered the benefits for our kura and decided to opt-in.

This is great news for our school's financial security, which will support a range of opportunities and reduce our school's reliance on voluntary parent donations.

Ngā Mihi

Leon Van't Veen and the Ashgrove School Board of Trustees